

# MONTHLY MEMBERSHIP PROGRESS REPORT

LOCATION CONNECTICUT

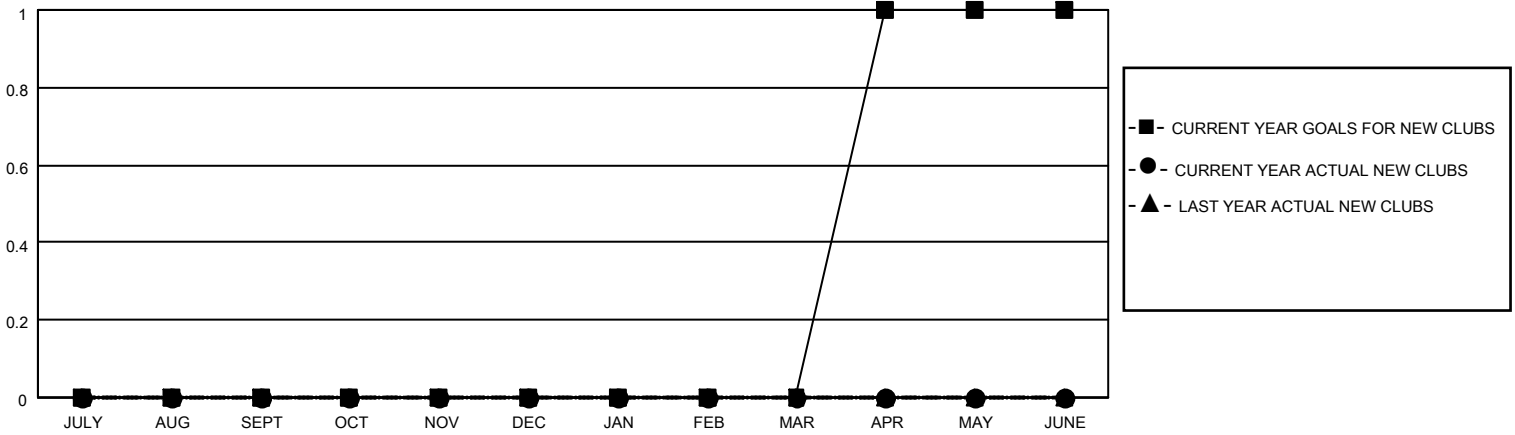
District 23 C

Results as of: 4/30/2022

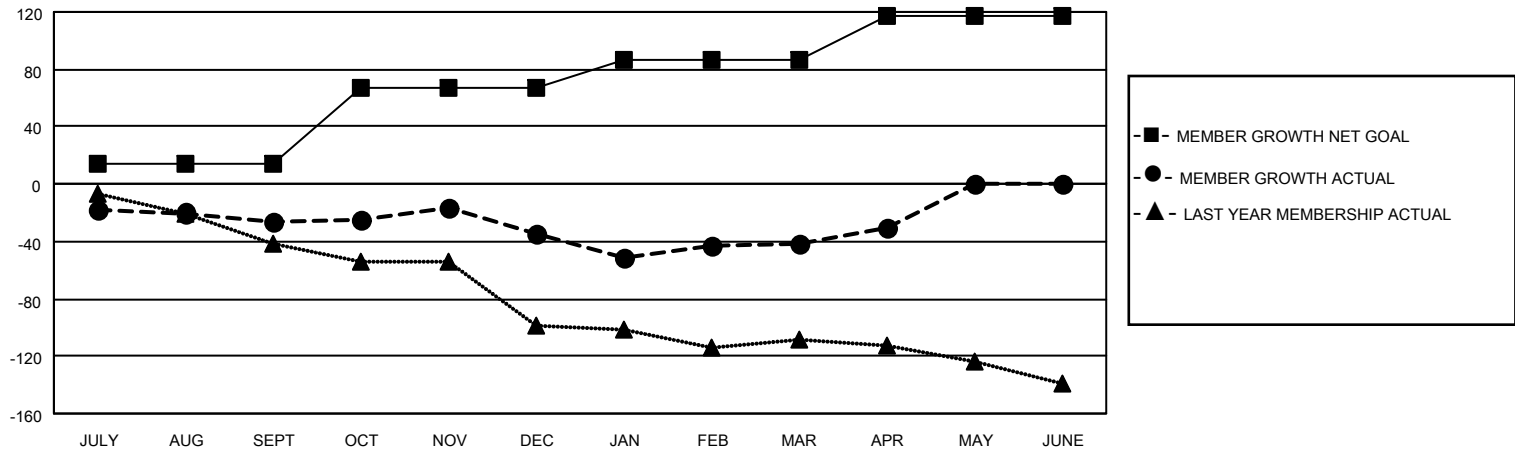
| Clubs                 |               |           |               |
|-----------------------|---------------|-----------|---------------|
| RESULTS FOR 2021-2022 |               |           |               |
| QUARTER               | NEW CLUB GOAL | NEW CLUBS | DROPPED CLUBS |
| JULY/AUG/SEPT         | 0             | 0         | 0             |
| OCT/NOV/DEC           | 0             | 0         | 0             |
| JAN/FEB/MAR           | 0             | 0         | 0             |
| APR/MAY/JUNE          | 1             | 0         | 0             |

| Members               |                        |                      |   |
|-----------------------|------------------------|----------------------|---|
| RESULTS FOR 2021-2022 |                        |                      |   |
| QUARTER               | MEMBER GROWTH NET GOAL | MEMBER GROWTH ACTUAL | DROPPED MEMBERS ACTUAL<br>(including transfers) |
| JULY/AUG/SEPT         | 14                     | 23                   | 40  |
| OCT/NOV/DEC           | 53                     | 55                   | 62  |
| JAN/FEB/MAR           | 20                     | 33                   | 36  |
| APR/MAY/JUNE          | 30                     | 19                   | 7   |

**GOALS AND ACTUAL NEW CLUBS CUMULATIVE**



**GOALS AND ACTUAL MEMBERS CUMULATIVE**



|                        |            |
|------------------------|------------|
| DROPPED CLUBS: 0       |            |
| <u>DROPPED MEMBERS</u> |            |
| DECEASED               | 18         |
| CLUB CANCELLED         | 0          |
| OTHER                  | 127        |
| <b>TOTAL</b>           | <b>145</b> |

35 CLUBS OF 56 ADDED 1 OR MORE NEW MEMBERS

[CLICK HERE FOR CUMULATIVE MEMBERSHIP DATA](#)

| <u>GENDER DISTRIBUTION</u>          |              |
|-------------------------------------|--------------|
| MALE                                | 961 (60.98%) |
| FEMALE                              | 615 (39.02%) |
| NON BINARY                          | 0 (0.00%)    |
| PREFER NOT TO ANSWER                | 0 (0.00%)    |
| TOTAL FAMILY UNIT MEMBERS 316       |              |
| FAMILY MEMBERS PAYING HALF DUES 162 |              |